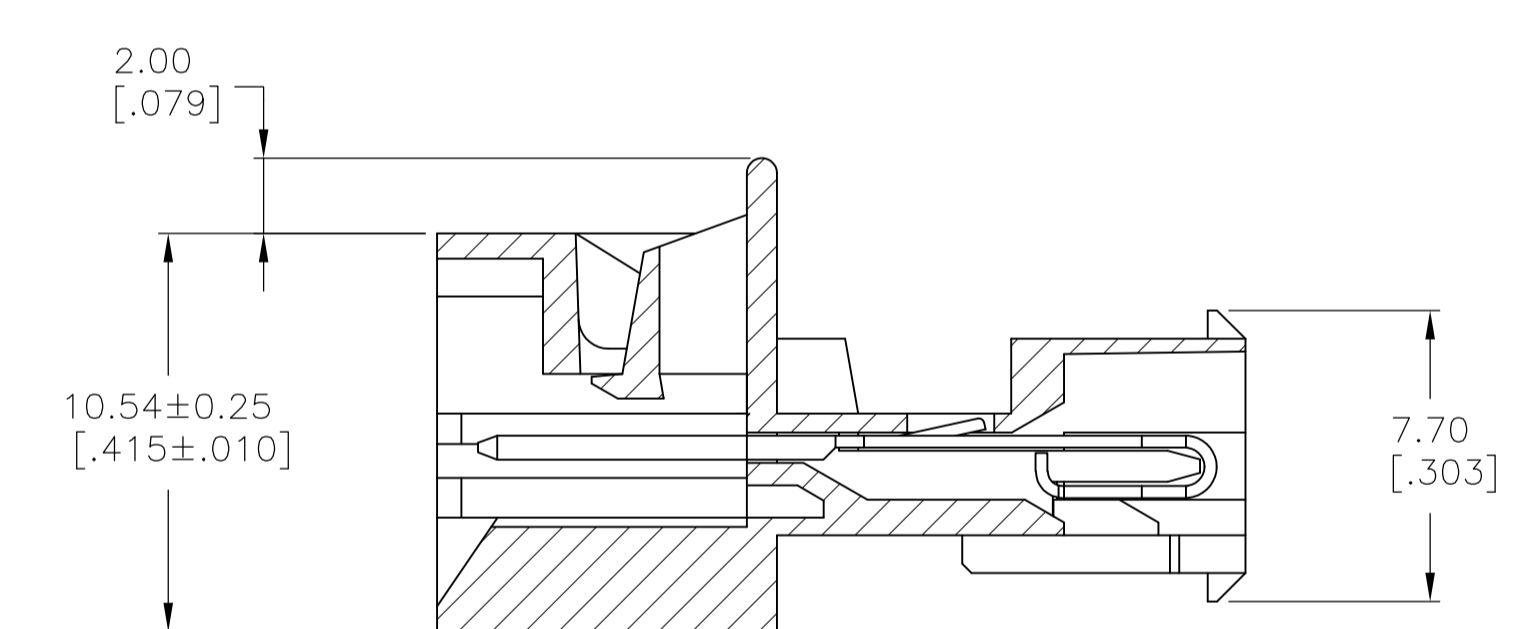
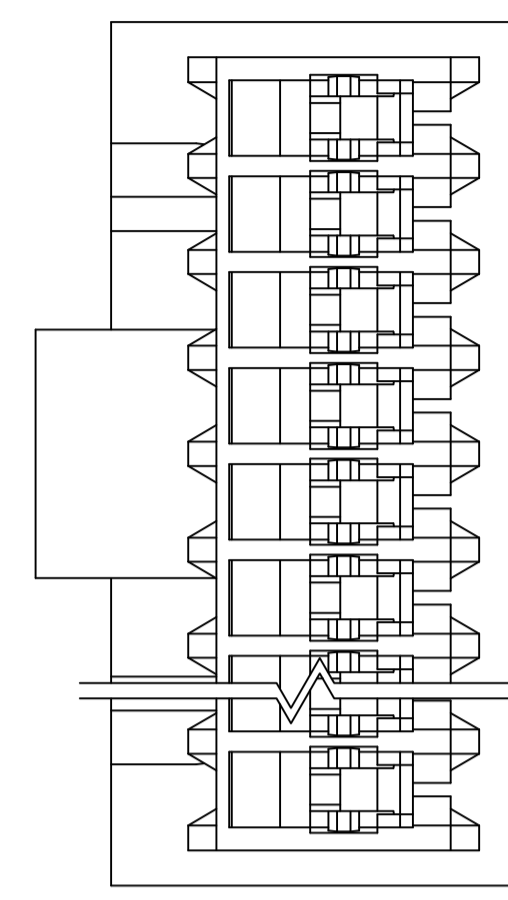
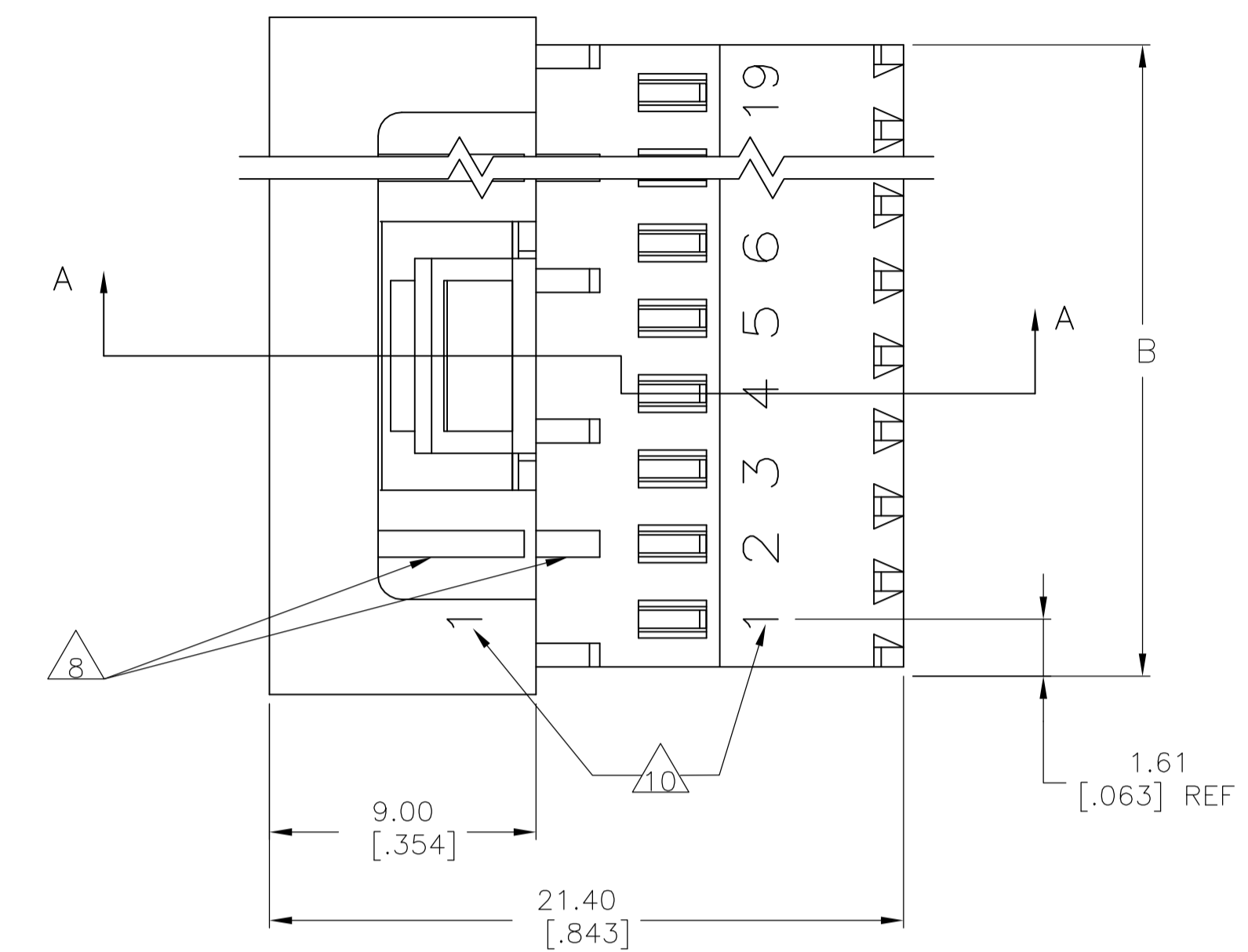
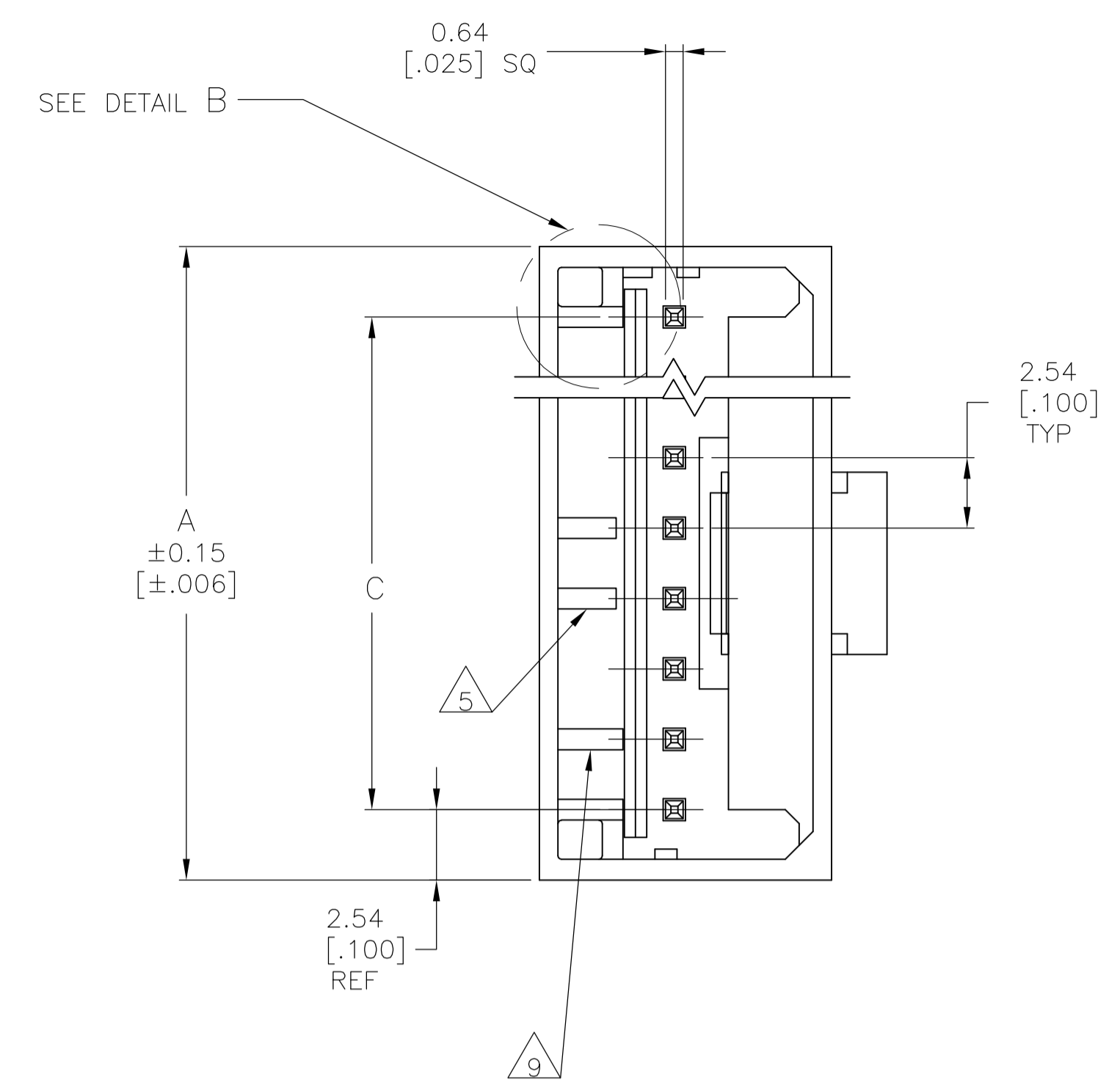
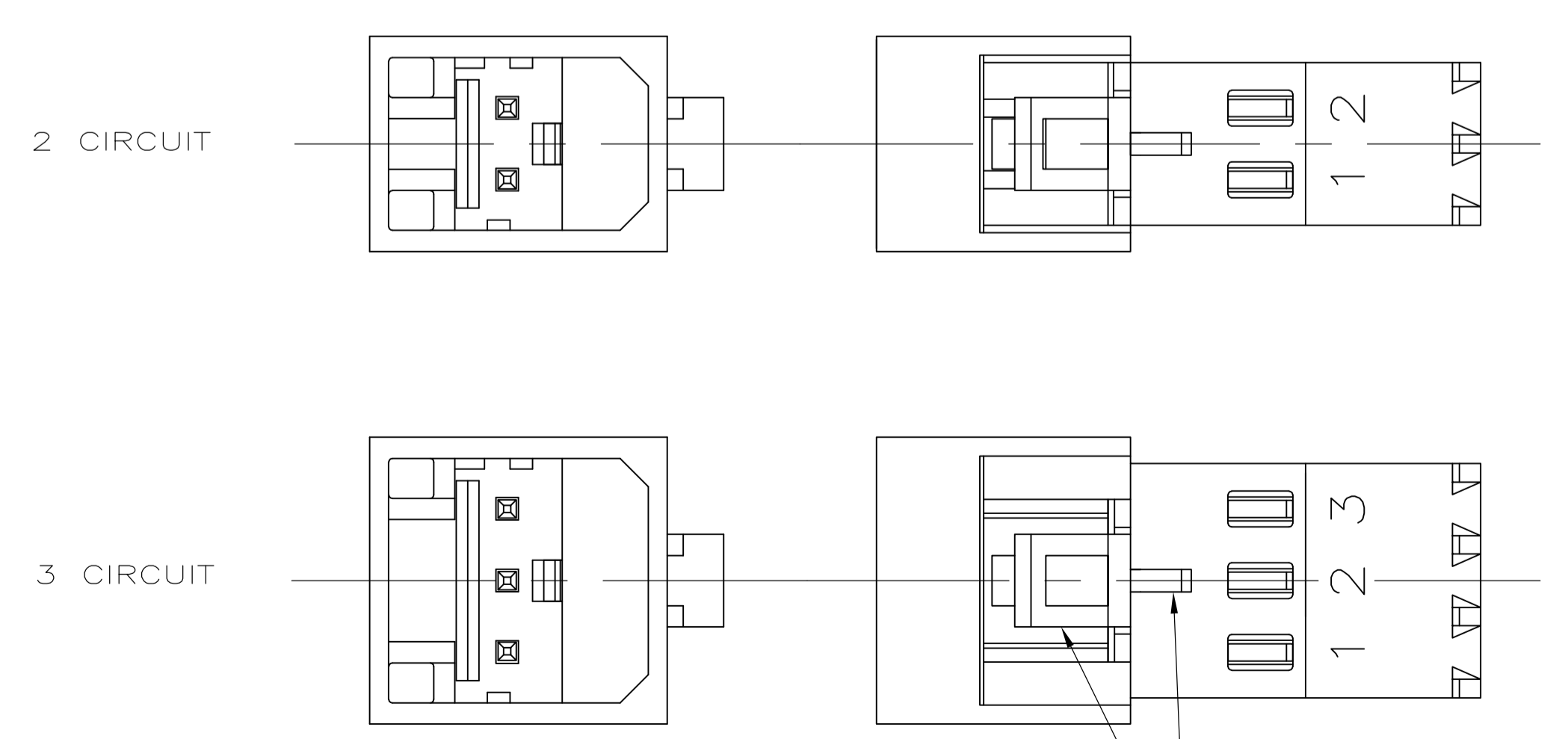


| LOC |    | DIST                      |         | REVISIONS |       |     |      |
|-----|----|---------------------------|---------|-----------|-------|-----|------|
| CM  | 00 | REV                       | DATE    | BY        | APP'D | REV | DATE |
| E1  |    | REVISED PER ECO-08-013568 | 02JUN08 | HMR       | DB    |     |      |



SECTION A-A



DETAIL A

DETAIL B  
 SCALE 10:1  
 ALTERNATE CONFIGURATION

- 1 MATERIAL:  
 HOUSING- NYLON UL94V-2 (WHITE).  
 CONTACTS- 0.30 [.012] THK COPPER ALLOY  
 DUAL PLATING : GOLD .00076[.000030] MIN THK  
 ONPOST, BRIGHT TIN-LEAD 0.00203[.000080] MIN  
 THK 647009-2 THRU 1-647009-9 OR MATTE TIN  
 0.00203[.000080] MIN THK. FOR 3-647009-2 THRU  
 4-647009-9 ON WIRE SLOT, WITH NICKEL UNDERPLATE  
 .00127[.000050] MIN THK ALL OVER.
- 2 CONTACTS ACCEPT 24 AWG (0.2mm<sup>2</sup>) TIN PLATED  
 SOLID, CONCENTRIC FUSED STRANDED, OR  
 CONCENTRIC STRANDED (7 AND 19 STRAND) WIRE  
 WITH 1.52 [.060] MAX INSULATION DIAMETER.
- 3 MATES WITH STANDARD MTA-100 CONNECTORS:  
 OF THE SAME CIRCUIT SIZES  
 WITH SIMILARLY PLATED CONTACTS  
 WITH POLARIZING TABS-CIRCUIT SIZES 4-19 ONLY  
 WITHOUT POLARIZING TABS-CIRCUIT SIZES 2 & 3.  
  
 DOES NOT MATE WITH MTA-100 CONNECTORS:  
 WITH POLARIZING TABS-CIRCUIT SIZES 2 & 3 ONLY.  
 (SEE DETAIL A)  
 WITH BLOCKED CIRCUITS -ALL CIRCUIT SIZES.  
 NOT RECOMMENDED FOR MATING WITH MTA-100  
 CONNECTOR WITHOUT POLARIZING TABS.  
 CIRCUIT SIZES 4-19.
- 4 ACCESSORIES:  
 REPLACEMENT IDC CONTACTS: 647031-2.  
 COVERS: SEE TABLE
- 5 QUANTITY OF CENTRALLY POSITIONED RAILS  
 VARIES WITH CIRCUIT SIZE. (SEE TABLE)  
 LOCATION MAY DIFFER FROM EXAMPLE SHOWN.
- 6 DIMENSIONS IN BRACKETS ARE IN INCHES.
- 7 SIMILAR SIZED LOCK AND SINGLE TAB USED  
 OR CIRCUITS 4 & 5.
- 8 QUANTITY OF GUSSET RIBS VARIES WITH  
 CIRCUIT SIZE (SEE TABLE).  
 LOCATION MAY DIFFER FROM EXAMPLE SHOWN.
- 9 INNER END RAIL PAIR NOT PRESENT FOR  
 CIRCUIT SIZES 2 OR 3.
- 10 CIRCUIT ID MAY APPEAR FULLY NUMBERED OR SHOWING  
 LOCATION 1 ONLY DEPENDING ON CIRCUIT SIZE.

METRIC

|  |           |                           |   |
|--|-----------|---------------------------|---|
| THIS DRAWING IS A CONTROLLED DOCUMENT. |           | DRN<br>B. LEWIS 14--98    | Tyco Electronics Corporation<br>Harrisburg, Pa 17105-3608 |
| DIMENSIONS:<br>mm [INCHES]             |           | CHK<br>R. SWING 14--98    |   |
| TOLERANCES UNLESS OTHERWISE SPECIFIED: |           | APP'D<br>J. FILLIS 14--98 | NAME  |
| 0 PLC ± -                              | 1 PLC ± - | 2 PLC ± 0.20 [.007]       | PRODUCT SPEC  |
| 3 PLC ± -                              | 4 PLC ± - | ANGLES ± -                | APPLICATION SPEC  |
| FINISH                                 |           | SIZE                      | CAGE CODE   |
| MATERIAL                               |           | WEIGHT                    | DRAWING NO  |
| CUSTOMER DRAWING                       |           | A1                        | 00779C=647009   |
| SCALE 5:1                              |           | SHEET 1 OF 2              | REV E1  |

| QTY OF GUSSET RIBS | QTY OF CENTRAL RAILS | MM                 | IN    | MM                   | IN    | MM    | IN    | NO. OF CIRCUITS | PART NO    |                 |         |
|--------------------|----------------------|--------------------|-------|----------------------|-------|-------|-------|-----------------|------------|-----------------|---------|
| 4                  | 2                    | 45.72              | 1.800 | 48.95                | 1.927 | 50.80 | 2.000 | 19              | 4-647009-9 |                 |         |
| 4                  | 2                    | 43.18              | 1.700 | 46.41                | 1.827 | 48.26 | 1.900 | 18              | 4-647009-8 |                 |         |
| 4                  | 2                    | 40.64              | 1.600 | 43.87                | 1.727 | 45.72 | 1.800 | 17              | 4-647009-7 |                 |         |
| 4                  | 2                    | 38.10              | 1.500 | 41.33                | 1.627 | 43.18 | 1.700 | 16              | 4-647009-6 |                 |         |
| 4                  | 2                    | 35.56              | 1.400 | 38.79                | 1.527 | 40.64 | 1.600 | 15              | 4-647009-5 |                 |         |
| 4                  | 2                    | 33.02              | 1.300 | 36.25                | 1.427 | 38.10 | 1.500 | 14              | 4-647009-4 |                 |         |
| 4                  | 2                    | 30.48              | 1.200 | 33.71                | 1.327 | 35.56 | 1.400 | 13              | 4-647009-3 |                 |         |
| 2                  | 1                    | 27.94              | 1.100 | 31.17                | 1.227 | 33.02 | 1.300 | 12              | 4-647009-2 |                 |         |
| 2                  | 1                    | 25.40              | 1.000 | 28.63                | 1.127 | 30.48 | 1.200 | 11              | 4-647009-1 |                 |         |
| 2                  | 1                    | 22.86              | .900  | 26.09                | 1.027 | 27.94 | 1.100 | 10              | 4-647009-0 |                 |         |
| 2                  | 1                    | 20.32              | .800  | 23.55                | .927  | 25.40 | 1.000 | 9               | 3-647009-9 |                 |         |
| 2                  | 0                    | 17.78              | .700  | 21.01                | .827  | 22.86 | .900  | 8               | 3-647009-8 |                 |         |
| 0                  | 0                    | 15.24              | .600  | 18.47                | .727  | 20.32 | .800  | 7               | 3-647009-7 |                 |         |
| 0                  | 0                    | 12.70              | .500  | 15.93                | .627  | 17.78 | .700  | 6               | 3-647009-6 |                 |         |
| 0                  | 0                    | 10.16              | .400  | 13.39                | .527  | 15.24 | .600  | 5               | 3-647009-5 |                 |         |
| 0                  | 0                    | 7.62               | .300  | 10.85                | .427  | 12.70 | .500  | 4               | 3-647009-4 |                 |         |
| 0                  | 0                    | 5.08               | .200  | 8.31                 | .327  | 10.16 | .400  | 3               | 3-647009-3 |                 |         |
| 0                  | 0                    | 2.54               | .100  | 5.77                 | .227  | 7.62  | .300  | 2               | 3-647009-2 |                 |         |
| 4                  | 2                    | 45.72              | 1.800 | 48.95                | 1.927 | 50.80 | 2.000 | 19              | 1-647009-9 |                 |         |
| 4                  | 2                    | 43.18              | 1.700 | 46.41                | 1.827 | 48.26 | 1.900 | 18              | 1-647009-8 |                 |         |
| 4                  | 2                    | 40.64              | 1.600 | 43.87                | 1.727 | 45.72 | 1.800 | 17              | 1-647009-7 |                 |         |
| 4                  | 2                    | 38.10              | 1.500 | 41.33                | 1.627 | 43.18 | 1.700 | 16              | 1-647009-6 |                 |         |
| 4                  | 2                    | 35.56              | 1.400 | 38.79                | 1.527 | 40.64 | 1.600 | 15              | 1-647009-5 |                 |         |
| 4                  | 2                    | 33.02              | 1.300 | 36.25                | 1.427 | 38.10 | 1.500 | 14              | 1-647009-4 |                 |         |
| 4                  | 2                    | 30.48              | 1.200 | 33.71                | 1.327 | 35.56 | 1.400 | 13              | 1-647009-3 |                 |         |
| 2                  | 1                    | 27.94              | 1.100 | 31.17                | 1.227 | 33.02 | 1.300 | 12              | 1-647009-2 |                 |         |
| 2                  | 1                    | 25.40              | 1.000 | 28.63                | 1.127 | 30.48 | 1.200 | 11              | 1-647009-1 |                 |         |
| 2                  | 1                    | 22.86              | .900  | 26.09                | 1.027 | 27.94 | 1.100 | 10              | 1-647009-0 |                 |         |
| 2                  | 1                    | 20.32              | .800  | 23.55                | .927  | 25.40 | 1.000 | 9               | 647009-9   |                 |         |
| 2                  | 0                    | 17.78              | .700  | 21.01                | .827  | 22.86 | .900  | 8               | 647009-8   |                 |         |
| 0                  | 0                    | 15.24              | .600  | 18.47                | .727  | 20.32 | .800  | 7               | 647009-7   |                 |         |
| 0                  | 0                    | 12.70              | .500  | 15.93                | .627  | 17.78 | .700  | 6               | 647009-6   |                 |         |
| 0                  | 0                    | 10.16              | .400  | 13.39                | .527  | 15.24 | .600  | 5               | 647009-5   |                 |         |
| 0                  | 0                    | 7.62               | .300  | 10.85                | .427  | 12.70 | .500  | 4               | 647009-4   |                 |         |
| 0                  | 0                    | 5.08               | .200  | 8.31                 | .327  | 10.16 | .400  | 3               | 647009-3   |                 |         |
| 0                  | 0                    | 2.54               | .100  | 5.77                 | .227  | 7.62  | .300  | 2               | 647009-2   |                 |         |
| DUST COVER         | STRAIN RELIEF COVERS | QTY OF GUSSET RIBS |       | QTY OF CENTRAL RAILS |       | MM    |       | IN              |            | NO. OF CIRCUITS | PART NO |
| 4                  | ACCESSORIES          | 8                  |       | 5                    |       | C     |       | B               |            | A               |         |

THIS DRAWING IS A CONTROLLED DOCUMENT.

|                         |  |                    |   |
|-------------------------|--|--------------------|---|
| DIMENSIONS: mm [INCHES] | TOLERANCES UNLESS OTHERWISE SPECIFIED: | DIN B LEWIS 14--98 | Tyco Electronics Corporation<br>Harrisburg, Pa 17105-3608 |
| 0 PLC ± -               | 1 PLC ± -                              | 14--98             |   |
| 2 PLC ± -               | 3 PLC ± -                              | 14--98             | MTA-100 POSTED CONNECTOR ASSEMBLY, CLOSED END, 24 AWG     |
| 4 PLC ± -               | ANGLES ± -                             |                    | APVD J. ELLIS   |
| MATERIAL                | FINISH                                 | SIZE               | CAGE CODE   |
|                         |  | A1                 | 00779   |
|                         |  | SCALE              | 1:1   |
|                         |  | SHEET              | 2 OF 2  |
|                         |  | REV                | E1  |

